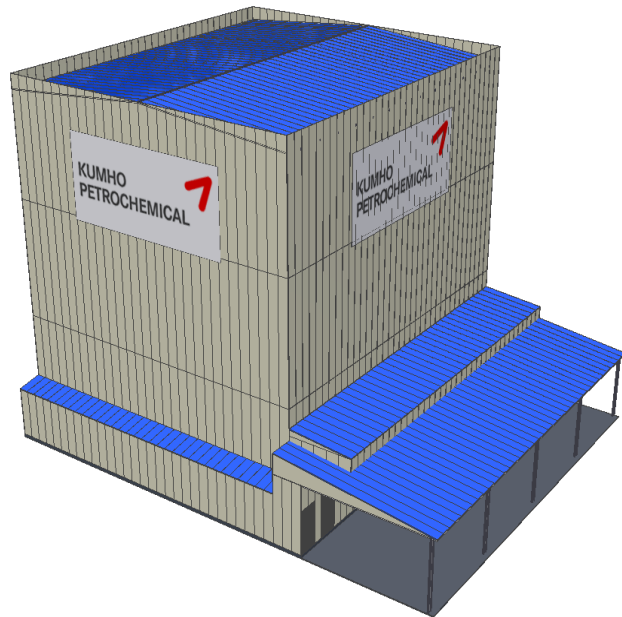




CASE STUDY_PETROCHEMICAL

KUMHO PETROCHEMICAL

KUMHO
PETROCHEMICAL 



Company Introduction

Kumho Petrochemical has around 40 years of history, which has led Korean petrochemical industry. Kumho Petrochemical innovated, researched, and developed Synthetic Rubbers, Synthetic resins, Specialty Chemicals, Combined Heat & Power Plants, Electronic Chemicals and Building Materials.

PROJECT OVERVIEW

Company	Kumho Petrochemical
Location	Yeosu, Korea
Load	Products of Petrochemical
ASRS Storage Capacity	5,640 pallet locations
Rack	Rack Supported Building (Load Beam Type)
Stacker Crane	5 Stacker Crane
Automated Materials Handling Equipment	2 RGVs 1 Big Bag Lifter 1 Sets Semi-auto Wrapping Machine 1 Lots Conveyor System

EQUIPMENT SPECIFICATION



Stacker Crane

- Speed: 105m/min
- Load Weight: Max 1,250 kg/pallet
- Euro Twin Fork Type
- Forking Speed: Max. 50 m/min

RGV (Rail Guided Vehicle)

- Speed: Max. 200 m/min
- High speed shuttle type
- Independent operation by individual controller on each vehicle



Big Bag Lifter

- Throughput rates between 30 and 60 cartons/min
- Diverter and integral vertical belt drive to offer a variety of divert configurations for sorting systems.
- It can be configured as a single side or bi-directional sorter.

EQUIPMENT SPECIFICATION



Conveyors

- Handling size: 1,250W x 1,150L x 1,980H (Incl. pallet)
- Handling weight: Max. 1,250kg (Incl. pallet)
- Controller: PLC
- Speed control : Inverter