



SMC STARTS WITH CUSTOMER'S TRUST

SMC has continued its efforts for automation and efficiency of logistics system.

Overview

Reliance - Hazir AS/RS

- Period: 2004.12 ~ 2006.01
- EURO pallet Rack : 30,384 Cell
- Single deep Twin fork Stacker crane : 10 Set's
- Two pallet Handling Liner RGV:2 Set's
- Auto_lift : 2 Set's
- Loading M/C : 2 Set's

Reliance - Poly (Silvassa)

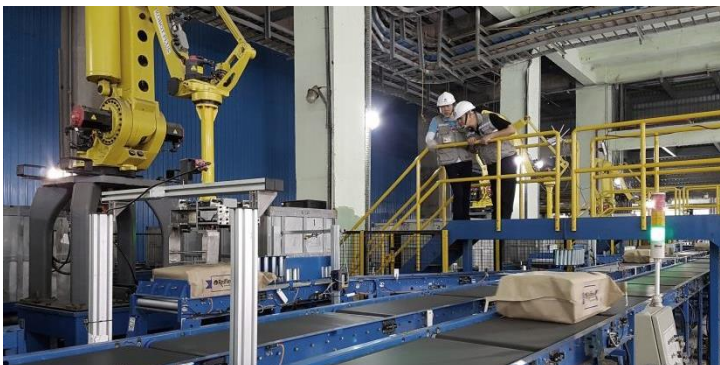
- Period: 2011.02 ~ 2014.07
- EURO pallet Rack : 27,048 Cell
- Single deep Single fork Stacker crane : 7 Set's
- One pallet Handling Liner RGV : 2 Set's
- Auto_lift : 3 Set's

Reliance - PET3 (Dahej)

- Period: 2012.02 ~ 2014.08
- EURO pallet Rack : 14,400 Cell
- Single deep Twin fork Stacker crane : 6 Set's
- Two pallet Handling Liner RGV : 3 Set's
- Auto_lift : 2 Set's

Reliance - Hazir AS/RS

- Period: 2012.08 ~ 2016.10
- EURO pallet Rack : 11,000 Cell
- Single deep Single fork Stacker crane : 6 Set's
- One pallet Handling Liner RGV : 2 Set's + 3 Set's
- Palletizing Robot : 4 Set's



Hazira AS/RS

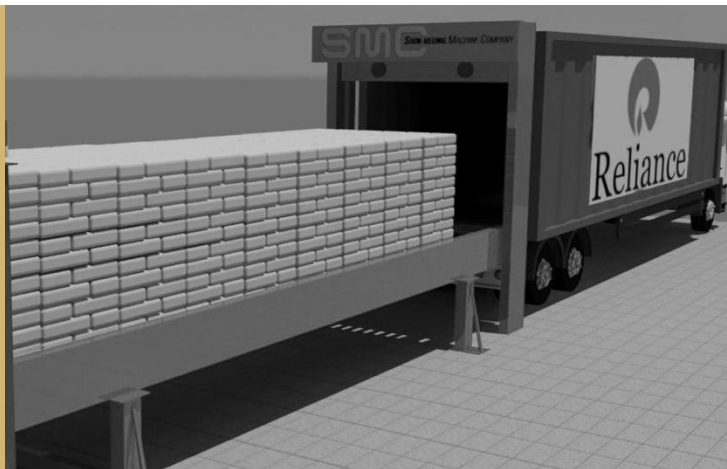
Reliance is a Fortune Global 500 company and the largest private company in India. The Old Hazira project expanded Reliance's new manufacturing facility in western India for raw materials, oil, gas and petrochemicals. 700 acres were used to manufacture POY, FDY polyester yarn and SMC participated in ASRS establishment with logistics center function that stores and packs products. SMC designed ASRS upon request of Reliance to provide efficient and accurate automatic system. Due to the increase in freight volume, SMC upgraded Stacker crane & RGV speed in 2015.

Equipment Specification

RACK	Rack Supported Building <ul style="list-style-type: none"> • Load Beam Type : 30,384 Cell • EURO Pallet Size : 1225W x 1400L x 185H • Load Size : 1225W x 1400L x 1470H • Load Weight : Max.875 Kg/pallet 	
Stacker crane	Twin Fork Stacker crane <ul style="list-style-type: none"> • Single Deep Twin Fork Type : 10 Set's • Drive Speed : 180 / 5 m/min • Lift Speed : 48 / 32 / 5 m/min • ForkSpeed : 50 / 5 m/min 	2015 Type Twin Fork Stacker crane <ul style="list-style-type: none"> • Single Deep Twin Fork Type : 10 Set's • Drive Speed : 210 / 5 m/min • Lift Speed : 50 / 5 m/min • ForkSpeed : 60 / 5 m/min
Linear RGV	One Rail One RGV Moving Type <ul style="list-style-type: none"> • Two Pallet Handling RGV : 2 Set's • Drive Speed : 120 / 5 m/min • Feeding Speed : 12 m/min 	2015 Type RGV Type <ul style="list-style-type: none"> • Two Pallet Handling RGV : 2 Set's • Drive Speed : 180 / 5 m/min • Feeding Speed : 30 m/min
Auto Lift	Chain Type <ul style="list-style-type: none"> • One Pallet Handling AutoLift : 2 Set's • Lift Speed : 30 / 5 m/min • Feeding Speed : 12 m/min 	

Poly(Silvassa)

Reliance-Poly is a factory located in India-Silvassa region which produces DTY, POY and FDY polyester yarn. This ASRS Project combines functions of a logistics center for warehousing, storage and shipment of manufactured and packaged products. It can be connected to 2nd floor of existing production line and long conveyor line for storing in ASRS.



Equipment Specification

<p>RACK</p>	<p>Rack Supported Building</p> <ul style="list-style-type: none"> • Load Beam Type : 27,048 Cell • Shipping Pallet Size : 800~1220W x 1150~1470L x 145~150H • Load Size : 1220W x 1470L x 1358H • Load Weight : Max.706 Kg/pallet 	
<p>Stacker crane</p>	<p>Single Fork Stacker crane</p> <ul style="list-style-type: none"> • Single Deep Single Fork Type : 7 Set's • Drive Speed : 240 / 5 m/min • Lift Speed : 60 / 5 m/min • ForkSpeed : 60 / 5 m/min 	
<p>Linear RGV</p>	<p>One Rail One RGV Moving Type</p> <ul style="list-style-type: none"> • One Pallet Handling RGV : 1 Set • Drive Speed : 240 / 5 m/min • Feeding Speed : 30 m/min 	<ul style="list-style-type: none"> • One Pallet Handling RGV : 1 Set • Drive Speed : 120 / 5 m/min • Feeding Speed : 12 m/min
<p>Auto Lift</p>	<p>Wire Rope Type</p> <ul style="list-style-type: none"> • One Pallet Handling AutoLift : 3 Set's • Lift Speed : 60 / 5 m/min • Feeding Speed : 30 m/min 	

PET3(Dahej)

PET is a factory located in India-Dahej region produces petrochemical product. Like PE.PP. This ASRS Project puts produced PE product grains into tonal bag and puts them in pallet for bundle and storage

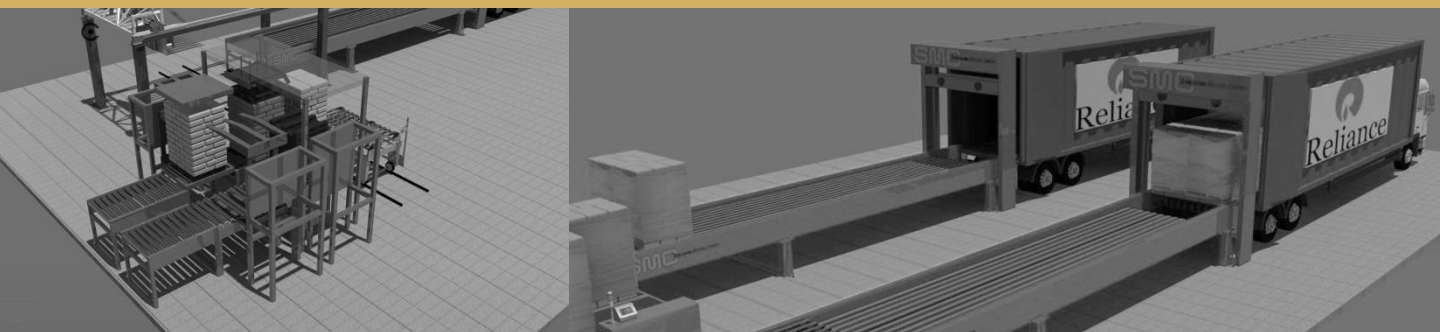


Equipment Specification

<p>RACK</p>	<p>Rack Supported Building</p> <ul style="list-style-type: none"> • Load Beam Type : 14,400 Cell • Shipping Pallet Size : 1250W x 1250L x 155H • Handling Size : 1350W x 1350L x 1455H • Load Weight : Max.1280 Kg/pallet
<p>Stacker crane</p>	<p>Twin Fork Stacker crane</p> <ul style="list-style-type: none"> • Single Deep Twin Fork Type : 6 Set's • Drive Speed : 180 / 5 m/min • Lift Speed : 35 / 5 m/min • ForkSpeed : 50 / 5 m/min
<p>Linear RGV</p>	<p>One Rail One RGV Moving Type</p> <ul style="list-style-type: none"> • Two Pallet Handling RGV : 2 Set's + 1 Set (Spear) • Drive Speed : 270 / 5 m/min • Feeding Speed : 30 m/min
<p>Auto Lift</p>	<p>Wire Rope Type</p> <ul style="list-style-type: none"> • One Pallet Handling Auto Lift : 3 Set's • Lift Speed : 60 / 5 m/min • Feeding Speed : 30 m/min

SBR(Hazira)

Reliance-SBR is a plant located in India-Hazira area which produces petrochemical synthetic rubber products. This project is designed for packing SBR and PBR rubber products which are manufactured in MB5 (Container) Warehouse.



Equipment Specification

<p>RACK</p>	<p>Rack Supported Building</p> <ul style="list-style-type: none"> • Load Beam Type : 11,000 Cell • MB5 container Size : 1465W x 1150L x 1098H • Handling Size : 1500W x 1150L x 1375H • Load Weight : Max.1400 Kg/pallet
<p>Stacker crane</p>	<p>Single Fork Stacker crane</p> <ul style="list-style-type: none"> • Single Deep Single Fork & Cabin Type : 6 Set's • Drive Speed : 180 / 5 m/min • Lift Speed : 40 / 5 m/min • ForkSpeed : 50 / 5 m/min
<p>Linear RGV</p>	<p>One Rail One RGV Moving Type</p> <ul style="list-style-type: none"> • One MB5 Handling RGV : 3 Set's+2 Set's (Spear) • Drive Speed : 270 / 5 m/min • Feeding Speed : 35 m/min
<p>Auto Lift</p>	<p>FANUC ROBO</p> <ul style="list-style-type: none"> • FANUC M-410iB/300 : 4 Set's • Gripper Hand : 5 Set's